



PRIME LINE PRIME TIME

PREMIUM SUPER DRY MITER CUTTER

9414

Ref. 600514

WINTER 2024



1498,-€

plus VAT



Scope of delivery:

Ø 355/90T CT saw blade for steel and stainless steel



Ø 355 mm
Saw blade



Ø 25,4 mm
Bore



140 mm
Cutting depth max.



1.400 min⁻¹
No load speed



2.400 W
Power input



230 V / 50 Hz
Voltage



27 kg
Net weight



Thinfix
clamping system
Ref. 600546

€ 93,00



90°

Ø 140 mm
Cutting capacities



125² mm

80² mm
Cutting capacities



105 x 155 mm

75 x 100 mm
Cutting capacities

from -45°
to -45°



2 patented vibration dampers



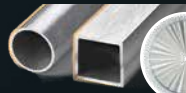
Continuously adjustable miter cuts



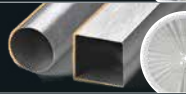
Double quick-release system

Carbide tipped saw blades (optional)

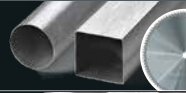
Ø 355 / 90T - Stainless steel NSF coated
Ref. 600570NSF | 293,-€



Ø 355 / 120T - Stainless steel - (thin-walled)
Ref. 600512I | 293,-€



Ø 355 / 90T - Steel & Stainless steel
(thin-walled)
Ref. 600570 | 219,-€



Ø 355 / 72T - Steel & Stainless steel
(medium-walled)
Ref. 600580 | 199,-€



Ø 355 / 60T - Steel & Stainless steel
(thick-walled)
Ref. 600590 | 179,-€



PREMIUM SUPER DRY CUTTER

9435

Ref. 600560T3



940,-€

plus VAT



Scope of delivery:

Ø 355 / 90T CT saw blade for steel and stainless steel



Ø 355 mm
Saw blade



Ø 25,4 mm
Bore



140 mm
Cutting depth max.



1.400 min⁻¹
No load speed



2.400 W
Power input



230 V / 50 Hz
Voltage



25 kg
Net weight



Excentric
clamping system
Ref. 609910

€ 156,00



90°

Ø 140 mm
Cutting capacities



125² mm

80² mm
Cutting capacities



105 x 155 mm

75 x 100 mm
Cutting capacities

45°



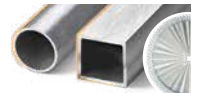
2 patented vibration dampers



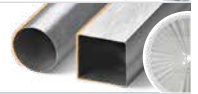
Miter cuts 90-75-60-45°

Carbide tipped saw blades (optional)

Ø 355 / 90T - Stainless steel NSF coated
Ref. 600570NSF | 293,-€



Ø 355 / 120T - Stainless steel - (thin-walled)
Ref. 600512I | 293,-€



Ø 355 / 90T - Steel & Stainless steel
(thin-walled)
Ref. 600570 | 219,-€



Ø 355 / 72T - Steel & Stainless steel
(medium-walled)
Ref. 600580 | 199,-€



Ø 355 / 60T - Steel & Stainless steel
(thick-walled)
Ref. 600590 | 179,-€



PREMIUM DRY CUTTER 9430

Ref. 600520T3



786,- €
plus VAT



Scope of delivery:
Ø 305 / 60T CT saw blade for steel



Ø 305 mm
Saw blade



Ø 25,4 mm
Bore



115 mm
Cutting depth max.



1.400 min⁻¹
No load speed



2.200 W
Power input



230 V / 50 Hz
Voltage



23 kg
Net weight



Vice for series cut
Ref. 1501128

€ 150,00



90° Ø 115 mm



100² mm



85 x 160 mm



Assembly stand
Ref. 600526T3

€ 340,00

45° Ø 85 mm
Cutting capacities

85² mm
Cutting capacities

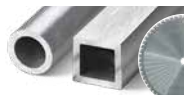
85 x 85 mm
Cutting capacities



Miter cuts 90-75-60-45°

Carbide tipped saw blades (optional)

Ø 305 / 60T - Steel, non-ferous metals and composites
Ref. 600530 | 141,-€



Ø 305 / 60T - Steel & Stainless steel
Ref. 600530 40 | 170,-€



Ø 305 / 60T - Cast iron / SML
Ref. 600535 | 141,-€



Ø 305 / 80T - Steel (thin-walled)
Ref. 600540 | 174,-€



DRY MITER CUTTER 9410

Ref. 600651



880,- €
plus VAT



Scope of delivery:
Ø 255 / 60T CT saw blade for unalloyed steel (thin walled) + fixation set „K“ for tubes Ø 30 up to 70 mm



Ø 255 mm
Saw blade



Ø 25,4 mm
Bore



100 mm
Cutting depth max.



1.600 min⁻¹
No load speed



1.500 W
Power input



230 V / 50 Hz
Voltage



19 kg
Net weight



90° Ø 70 x 4 mm



70² x 4 mm



100 x 70 x 4 mm

from -45° to -45° Ø 60 x 4 mm
Cutting capacities

60² x 4 mm
Cutting capacities

60 x 60 x 4 mm
Cutting capacities



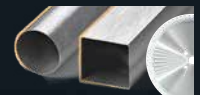
Double 3-stage quick release system



Continuously adjustable miter cuts

Carbide tipped saw blades (optional)

Ø 255 / 66T - Stainless steel NSF coated
Ref. 600654NSF | 237,-€



Ø 255 / 60T - Unalloyed steel (thin-walled)
Ref. 600598 | 117,-€



Ø 255 / 66T - Steel (thin-walled)
Ref. 600654 | 164,-€



Ø 255 / 80T - Aluminum
Ref. 600655A | 135,-€



Ø 255 / 66T - Steel (thin-walled) „LBS - impact resistant“
Ref. 72225566 | 155,-€



SUPER HAND DRY CUTTER

8320

Ref. 608270

PRIME
LINE



1150,-€
plus VAT



Scope of delivery:

Ø 320 / 84T CT saw blade for sandwich panels & steel



Ø 320 mm
Saw blade



Ø 25,4 mm
Bore



120 mm
Cutting depth max.



1.700 min⁻¹
No load speed



1.800 W
Power input



230 V / 50 Hz
Voltage



8,4 kg
Net weight



Guide rail set
Ref. 608275SET

€ 198,00



90° Ø 120 x 6 mm
Cutting capacities



120° x 6 mm
Cutting capacities



120° x 6 mm
Cutting capacities



Heavy-duty carry
case
Ref. 60827Box

€ 299,00



Connection for optional suction device



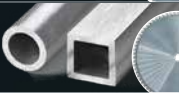
Integrated chip collector

Carbide tipped saw blades (optional)

Ø 320 / 84Z - Sandwichpanels & Steel
Ref. 608276 | 209,-€



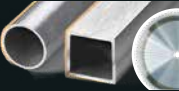
Ø 320 / 72Z - Steel (thick-walled)
Ref. Nr- 608278 | 188,-€



Ø 320 / 72Z - Aluminum
Ref. 608278A | 204,-€



Ø 320 / 84Z - Stainless steel NSF coated
Ref. 608276NSF | 282,-€



HAND DRY CUTTER 8203E CORDLESS

Ref. 608295E

MADE
IN
GERMANY

CAS
CORDLESS
ALLIANCE
SYSTEM



698,-€
plus VAT



Scope of delivery:

Carry case, Ø 203 / 48T carbide tipped „LBS impact resistant“ saw blade, 2x high performance 18V LiHD 5,5A batteries, Air-cooled LiHD high speed loading station



Ø 203 mm
Saw blade



Ø 25,4 mm
Bore



67 mm
Cutting depth max.



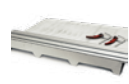
3.500 min⁻¹
No load speed



18 V
Voltage



5,4 kg
Net weight



Guide rail set
Ref. 608275ASET

€ 219,00



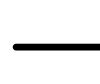
90° Ø 67 x 6 mm



67° x 6 mm



67 x 6 mm



10 mm

45° bevel cut
Cutting capacities

42° x 4 mm
Cutting capacities

42 x 4 mm
Cutting capacities

8 mm
Cutting capacities



Powered by CAS batteries



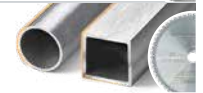
Integrated chip collector

Carbide tipped saw blades (optional)

Ø 203 / 48Z - Steel (thin-walled)
„LBS - impact resistant“
Ref. 72220348 | 104,-€



Ø 203 / 54Z - Stainless steel
Ref. 72120354 | 113,-€



HAND DRY CUTTER 8230N

Ref. 6082801



629,- €
plus VAT



Scope of delivery:

Ø 230 / 48T CT saw blade for steel and stainless steel



Ø 230 mm
Saw blade



Ø 25,4 mm
Bore



82 mm
Cutting depth max.



2.200 min⁻¹
No load speed



1.700 W
Power input



230 V / 50 Hz
Voltage



7,1 kg
Net weight



Guide rail set
Ref. 608275ASET

€ 219,00



90°
Ø 82 x 6 mm



82² x 6 mm
Cutting capacities



56 x 4 mm
Cutting capacities



8 mm
Cutting capacities

45°
bevel cut

Ø 56 x 4 mm
Cutting capacities

56² x 4 mm
Cutting capacities

56 x 4 mm
Cutting capacities

8 mm
Cutting capacities



Integrated chip collector

Carbide tipped saw blades (optional)

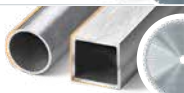
Ø 230 / 48Z - Steel
Ref. 72123048 | 98,-€



Ø 230 / 48Z - Stainless steel & Steel
Ref. 72123048I | 104,-€



Ø 230 / 48Z - Stainless steel NSF coated
Ref. 72123048NSF | 171,-€



Ø 230 / 60Z - Aluminum
Ref. 72123060 | 107,-€



Ø 230 / 68Z - Steel (thin-walled)
Ref. 72123068 | 118,-€



HAND DRY CUTTER 8203

Ref. 608295



545,- €
plus VAT



Scope of delivery:

Ø 203 / 42T CT saw blade for steel & stainless steel



Ø 203 mm
Saw blade



Ø 25,4 mm
Bore



67 mm
Cutting depth max.



3.700 min⁻¹
No load speed



1.700 W
Power input



230 V / 50 Hz
Voltage



6,3 kg
Net weight



Guide rail set
Ref. 608275ASET

€ 219,00



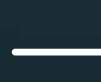
90°
Ø 67 x 6 mm



67² x 6 mm
Cutting capacities



67 x 6 mm
Cutting capacities



10 mm
Cutting capacities

45°
bevel cut

Ø 42 x 6 mm
Cutting capacities

42² x 4 mm
Cutting capacities

42 x 4 mm
Cutting capacities

8 mm
Cutting capacities



Integrated chip collector

Carbide tipped saw blades (optional)

Ø 203 / 42Z - Steel & Stainless steel
Ref. 72120342I | 91,-€



Ø 203 / 48Z - Aluminum
Ref. 72120048A | 101,-€



Ø 203 / 48Z - Steel (thin-walled)
„LBS - impact resistant“
Ref. 72220348 | 104,-€



Ø 203 / 70Z - Steel (thin-walled)
Ref. 72120070 | 135,-€



CARBIDE TIPPED SAW BLADES 137 - 730 mm




For high speed stationary semi-automatic and fully automatic cutting units.

Fast cutting, burr free and without coolant of pipes and profiles made of:
Steel, stainless steel, plastics, compound materials, aluminum and other non-ferrous metals.

The DryTech® saw blades can saw different materials and shapes due to a variety of different geometries: cladding, pipes, sealing profiles, sandwich elements, composites, window profiles and ventilation profiles, etc. The special tooth shape guarantees a perfect cutting surface and a long service life of the saw blades.

- Shortest cycle times thanks to high cutting speed
- Material saving through thin-cutting technology
- Flexible application in different materials and shapes
- Laser slots filled with synthetic resin reduce noise
- Very high durability
- Excellent cut quality
- Resharpenable up to 5 times due to generous carbide teeth

 DRY-CUTTING-TECHNOLOGIE
No coolant or lubricant required



Ø [mm]	Bore [mm]	Kerf [mm]	Teeth	Max. rpm	Material	Reference	Price in €
137	20	1,50	30	4.000	Inox	72113730I	63,00
137	20	1,00	30	4.500	Steel (thin walled)	72213730	63,00
150	20	1,50	42	4.000	Inox	72115042I	68,00
150	20	1,20	34	4.500	Steel (thin walled)	72215034	68,00
160	30*	1,80	32	4.200	Steel	72016032	67,00
165	20	1,70	48	4.000	Inox	72116548I	73,00
165	20	1,20	40	4.200	Steel (thin walled)	72216540	74,00
180	20	1,85	36	4.000	Steel	72118036	73,00
180	20	1,60	48	4.000	Steel	72118048S	87,00
180	20	2,00	48	4.000	Steel & Inox	72118048YS	109,00
180	20	1,20	48	4.000	Steel (thin walled)	72218048	96,00
184	16	1,20	48	4.000	Steel (thin walled)	72218448	97,00
192	20	1,85	48	4.000	Steel (thin walled)	719248	88,00
192	20	1,85	48	4.000	Aluminum	719248A	80,00
192	20	1,85	70	4.000	Sheets	719270	128,00
192	20	1,20	48	4.000	Steel (thin walled)	72219248	99,00
200	30*	1,90	40	3.800	Steel	72020040	99,00
200	30*	1,90	60	3.800	Steel (thin walled)	72020060	129,00
203	25,4	1,90	42	3.800	Inox	72120342I	91,00
203	25,4	1,90	48	3.800	Aluminum	72120048A	101,00
203	25,4	1,70	54	3.800	Inox (Cordless Saws)	72120354I	113,00
203	25,4	1,90	70	3.800	Steel (thin walled)	72120070	135,00
203	25,4	1,20	48	3.800	Steel (thin walled)	72220348	104,00
203	16	1,20	48	3.800	Steel (thin walled)	72220348M	104,00
210	30*	2,00	42	3.600	Steel	72021042	88,00
210	30*	2,00	64	3.600	Steel (thin walled)	72021064	111,00
230	30*	2,00	48	3.000	Steel	72023048	101,00
230	30*	2,00	60	3.000	Aluminum	72023060	112,00
230	30*	2,00	68	3.000	Steel (thin walled)	72023068	122,00
230	25,4	2,00	48	3.000	Steel	72123048	98,00
230	25,4	2,00	48	3.000	Steel & Inox	72123048I	104,00
230	25,4	2,00	48	3.000	Inox	72123048NSF	171,00
255	25,4	2,00	60	2.200	Steel	600598	117,00
255	25,4	2,00	66	2.200	Steel (thin walled)	600654	164,00

* with reducing rings
(30/25, 30/20, 30/16 included).

Ø [mm]	Bore [mm]	Kerf [mm]	Teeth	Max. rpm	Material	Reference	Price in €
255	25,4	2,00	66	2.200	Inox	600654NSF	237,00
255	25,4	2,20	80	2.200	Aluminum	600655A	135,00
255	25,4	1,50	66	2.200	Steel (thin walled)	72225566	155,00
305	25,4	2,20	60	1.800	Steel	600530	141,00
305	25,4	2,20	60	1.800	Steel & Inox	600530 40	170,00
305	25,4	2,20	60	1.800	Cast iron	600535	141,00
305	25,4	2,20	80	1.800	Steel (thin walled)	600540	174,00
320	25,4	2,20	84	1.800	Steel	608276	209,00
320	25,4	2,20	84	1.800	Inox	608276NSF	282,00
320	25,4	2,20	72	1.800	Steel (thick walled)	608278	188,00
355	25,4	2,20	120	1.800	Inox- & Steel (thin)	600512I	293,00
355	25,4	2,20	90	1.800	Steel & Inox	600570	219,00
355	25,4	2,20	90	1.800	Inox	600570NSF	293,00
355	25,4	2,20	72	1.800	Steel & Inox	600580	199,00
355	25,4	2,20	60	1.800	Steel & Inox	600590	179,00
355	25,4	2,20	60	1.800	Cast iron	600591	179,00
355	25,4	2,20	66	1.800	Steel	600595	190,00
355	25,4	3,40	96	3.500	Aluminum	600594	170,00
405	25,4	2,5	80	1.800**	Steel	4050800002	363,00
405	25,4	2,5	102	1.800**	Steel & Inox	4051021003	422,00
455	50	3,4	100	1.800**	Steel	4551000002	513,00
455	50	3,4	120	1.800**	Steel & Inox	4551201003	606,00
560	50	3,6	120	1.800**	Steel	5601200002	655,00
560	50	3,6	132	1.800**	Steel & Inox	5601321003	716,00
630	60	4	140	1.800**	Steel	6301400002	946,00
630	60	4	150	1.800**	Steel	6301501003	1.015,00
630	60	4	210	1.800**	Steel & Inox	6302100002	1.260,00
680	60	4	140	1.800**	Steel	6801400002	1.154,00
680	60	4	150	1.800**	Steel	6801501003	1.178,00
680	60	4	210	1.800**	Steel	6802100002	1.340,00
700	60	4	210	1.800**	Steel	7002100002	1.433,00
730	60	4	210	1.800**	Steel	7302100002	1.518,00

** Max. cutting speed in m/min

NSF - COATED TIPPED SAW BLADES

Aluminum titanium chromium nitride, AlTiCrN coating

For maximum performance and service life when cutting stainless steel. Also suitable for special applications when cutting materials that tend to stick. The silver-colored layer is characterized by high hardness and oxidation resistance. In addition, the NSF saw blade is designed to minimize the adhesion tendency when processing inox.

LBS - IMPACT-RESISTANT CARBIDE TIPPED SAW BLADES

Ultra thin-walled - ideal for metal circular saws

Ideal for cutting metal grids and gratings, trapezoidal sheets, profiles, cable ducts, roller shutter tubes, etc.

At 1,0 - 1,5 mm, the LBS saw blades are significantly thinner than conventional saw blades. They are therefore material-saving, more efficient and faster. Energy-saving for increased battery performance.



120 mm

PRIME LINE PRIME TIME