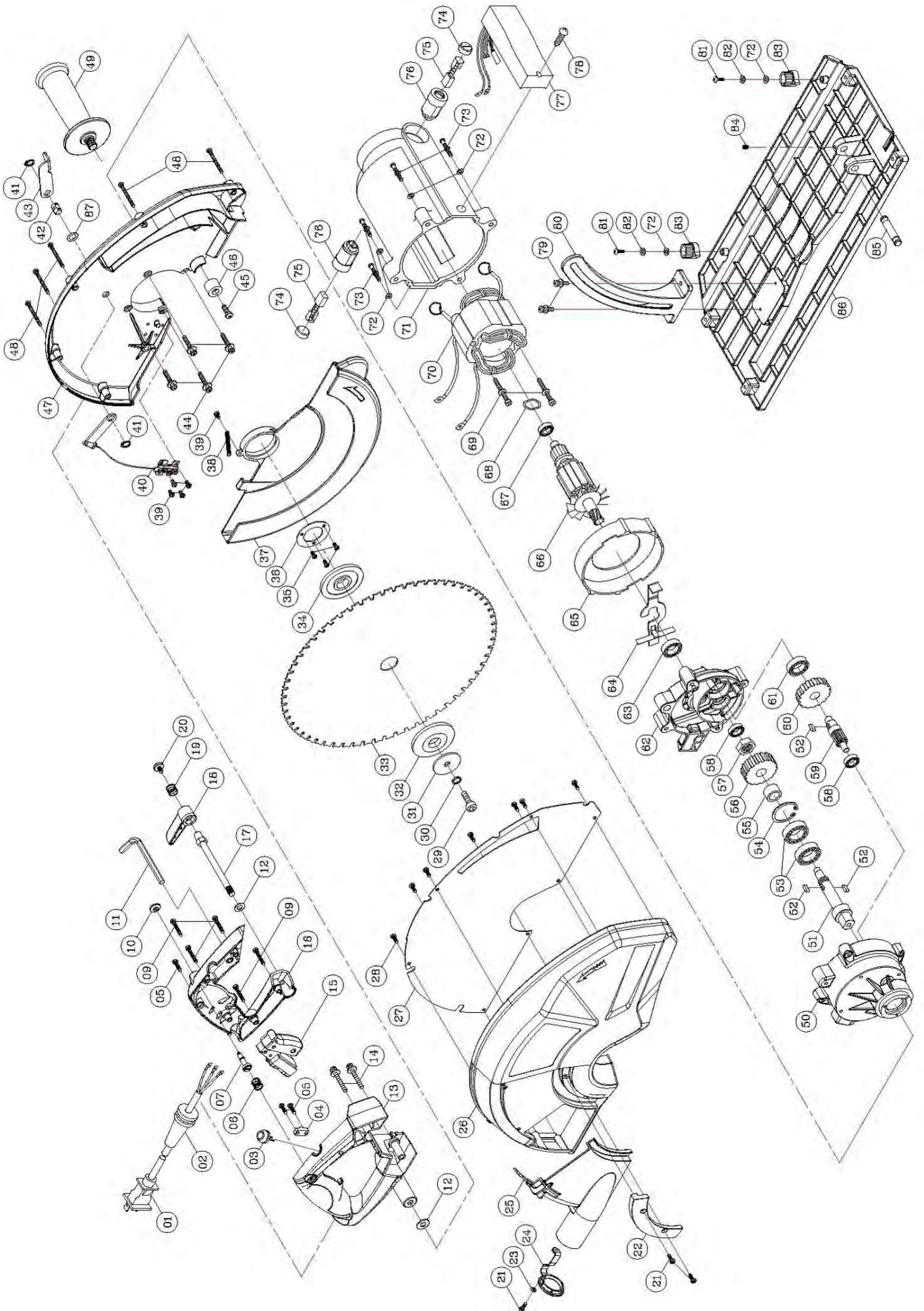


Super Hand Dry Cutter 8320



Super Hand Dry Cutter 8320

ITEM	PART NO	QTY	PART NAME		**Price in \$
1.)	JEP32001	1	POWER SUPPLY CORD	1.5 x 2C x 5M VDE 220 V	\$ 26.24
	JEP23059US	1	POWER SUPPLY CORD	110 V US Plug	\$ 53.08
2.)	JEP23060	1	CORD ARMOR		\$ 2.33
3.)	JEP32003	1	LED INDICATOR LIGHT	220 V	\$ 12.83
4.)	JEP32004	1	CORD CLIP		\$ 0.58
5.)	JEP32005	3	SCREW	M4 x 14	\$ 0.58
6.)	JEP32006	1	SPRING		\$ 0.58
7.)	JEP32007	1	LOCK RELEASE PLUNGER		\$ 6.42
9.)	JEP32009	5	PAN HEAD SCREW	M4 x 25	\$ 0.58
10.)	JEP32010	1	LOCK RELEASE BUTTON		\$ 4.67
11.)	JEP32011	1	L-HEX KEY	M6	\$ 1.75
12.)	JEP32012	2	FLAT WASHER	Ø8 x Ø20 x 1	\$ 0.58
13.)	JEP32013	1	HANDLE HALF RIGHT	PA66 127.5g	\$ 26.83
14.)	JEP32014	2	SCREW	M5 x 40	\$ 0.58
15.)	JEP32015	1	SWITCH		\$ 47.24
16.)	JEP32016	1	HANDLE HALF LEFT	PA66 71g	\$ 26.83
17.)	JEP32017	1	DEPTH LOCK SHAFT		\$ 15.17
18.)	JEP32018	1	DEPTH LOCK LEVER		\$ 1.75
19.)	JEP32019	1	SPRING	Ø0.7 x Ø10.5 x Ø11.9 x 4	\$ 0.58
20.)	JEP32020	1	TORX HEAD SCREW	M5 x 8	\$ 1.16
21.)	JEP32021	3	PAN HEAD SCREW	M4 x 10	\$ 0.58
22.)	JEP32022	1	COVER TRACK	PA66 15g	\$ 8.75
23.)	JEP32023	1	FLAT WASHER	Ø4 x Ø10 x 1	\$ 0.58
24.)	JEP32024	1	DUST PORT PLUG	EP 5.5g	\$ 4.08
25.)	JEP32025	1	DUST CHAMBER COVER	PA66 70.6g	\$ 18.08
26.)	JEP32026	1	OUTER BLADE COVER	PA66 394g	\$ 51.32
27.)	JEP32027	1	INNER PLATE	480.3g	\$ 29.16
28.)	JEP32028	7	PAN HEAD SCREW	M4 x 6	\$ 0.58
29.)	JEP32029	1	SOCKET CAP BOLT	M8 x 20	\$ 0.58
30.)	MA3506	1	SPRING WASHER	M8	\$ 0.58
31.)	JEP32031	1	FLAT WASHER	Ø8 x Ø40 x 2.5	\$ 1.16
32.)	JEP32032	1	OUTER ARBOR FLANGE		\$ 36.74
34.)	JEP32034	1	INNER FLANGE		\$ 36.74
35.)	JEP32035	3	FLAT HEAD SCREW	M4 x 6	\$ 0.58
36.)	JEP32036	1	BEARING COVER PLATE		\$ 3.50
37.)	JEP32037	1	LOWER BLADE GUARD	374g	\$ 108.48
38.)	JEP32038	1	SPRING		\$ 1.75
39.)	JEP32039	5	PAN HEAD SCREW	M4 x 6	\$ 0.58
40.)	JEP32040	1	KICKER MECHANISM		\$ 20.41
41.)	JEP32041	2	EXTERNAL CIRCLIP	S-10	\$ 0.58
42.)	JEP32042	1	PIVOT PIN		\$ 8.16
43.)	JEP32043	1	KICKER LEVER		\$ 4.08
44.)	JEP32044	4	SCREW	M5 x 25	\$ 0.58
45.)	JEP32045	1	SCREW	M6 x 12	\$ 0.58
46.)	JEP32046	1	BUMP STOP		\$ 1.16
47.)	JEP32047	1	UPPER BLADE COVER	590g	\$ 174.96
48.)	JEP23056	5	PAN HEAD SCREW	M4 x 25	\$ 0.58
49.)	JEP32049	1	SIDE HANDLE		\$ 11.66
50.)	JEP32050	1	GEAR CASE	460g	\$ 93.31
51.)	JEP32051	1	SPINDLE		\$ 43.15
52.)	DP037	3	PARALLEL KEY	5 x 5 x 10	\$ 1.75
53.)	JEP32053	2	BALL BEARING	6202-2NSE NACHI	\$ 18.08
54.)	MA3518	1	INTERNAL CIRCLIP	R-35	\$ 0.58
55.)	JEP32055	1	SPACER		\$ 4.08
56.)	JEP32056	1	OUTPUT GEAR	S45C T36	\$ 47.24
57.)	JEP32057	1	NUT	M14 x P2.0 x 7	\$ 0.58

Super Hand Dry Cutter 8320

58.)	JEP23014	2	BALL BEARING	608 zz NMB	\$ 7.58
59.)	JEP32059	1	INTERMEDIATE PINION	SCM415 T11	\$ 34.40
60.)	JEP32060	1	INPUT GEAR	SCM415 T34	\$ 48.41
61.)	JEP23044	1	BALL BEARING	6200 zz TPI	\$ 6.37
62.)	JEP32062	1	GEAR PLATE	292g	\$ 56.57
63.)	JEP32063	1	BALL BEARING	6002-LLU TPI	\$ 22.16
64.)	JEP32064	1	SPINDLE LOCK UNIT		\$ 7.58
65.)	JEP32065	1	FAN BAFFLE		\$ 2.92
66.)	JEP32066UK	1	ARMATURE	110V	\$ 181.96
	JEP32066	1	ARMATURE	220V	\$ 182.54
67.)	JEP23044	1	BALL BEARING	6200-LLU TPI	\$ 19.82
68.)	JEP32068	1	WAVE WASHER	Ø29.5	\$ 0.58
69.)	JEP32069	2	SCREW W/ WASHER	M5 x 60	\$ 0.58
70.)	JEP32070UK	1	STATOR	110V	\$ 114.31
	JEP32070	1	STATOR	220V	\$ 116.64
71.)	JEP32071	1	MOTOR HOUSING		\$ 38.50
72.)	JEP23048	6	FLAT WASHER	Ø5 x Ø12 x 1	\$ 0.58
73.)	JEP32073	4	SCREW W/ WASHER	M5 x 60	\$ 0.58
74.)	JEP23052	2	BRUSH CAP	7 x 17	\$ 0.58
75.)	JEP23051	1	CARBON BRUSH SET (2 Piece	7 x 17 x 17	\$ 17.16
76.)	JEP23050	2	BRUSH HOLDER	7 x 17	\$ 6.42
77.)	JEP32077UK	1	ELECTRONICS UNIT	110V	\$ 145.80
	JEP32077	1	ELECTRONICS UNIT	220V	\$ 145.80
78.)	JEP32078	1	SCREW	M5 x 20	\$ 0.58
79.)	JEP32079	2	PAN HEAD SCREW	M5 x 16	\$ 0.58
80.)	JEP32080	1	PIVOT BRACKET	140g	\$ 36.16
81.)	JEP32081	2	TRUSS HEAD SCREW	M5 x 8	\$ 0.58
82.)	JEP32082	2	SPRING WASHER	φ5 x φ12 x 0.5	\$ 0.58
83.)	JEP32083	2	GUIDE CLEARANCE ADJUSTOR		\$ 0.58
84.)	JEP32084	1	SOCKET SET SCREW	M5 x 8	\$ 0.58
85.)	JEP32085	1	PIVOT PIN	Ø10 x 54	\$ 2.92
86.)	JEP32086	1	BASE	717g	\$ 184.87
87.)	JEP32087	1	RUBBER WASHER	Ø10 x Ø18 x 1.1	\$ 1.16